



SCHOOLHOUSE

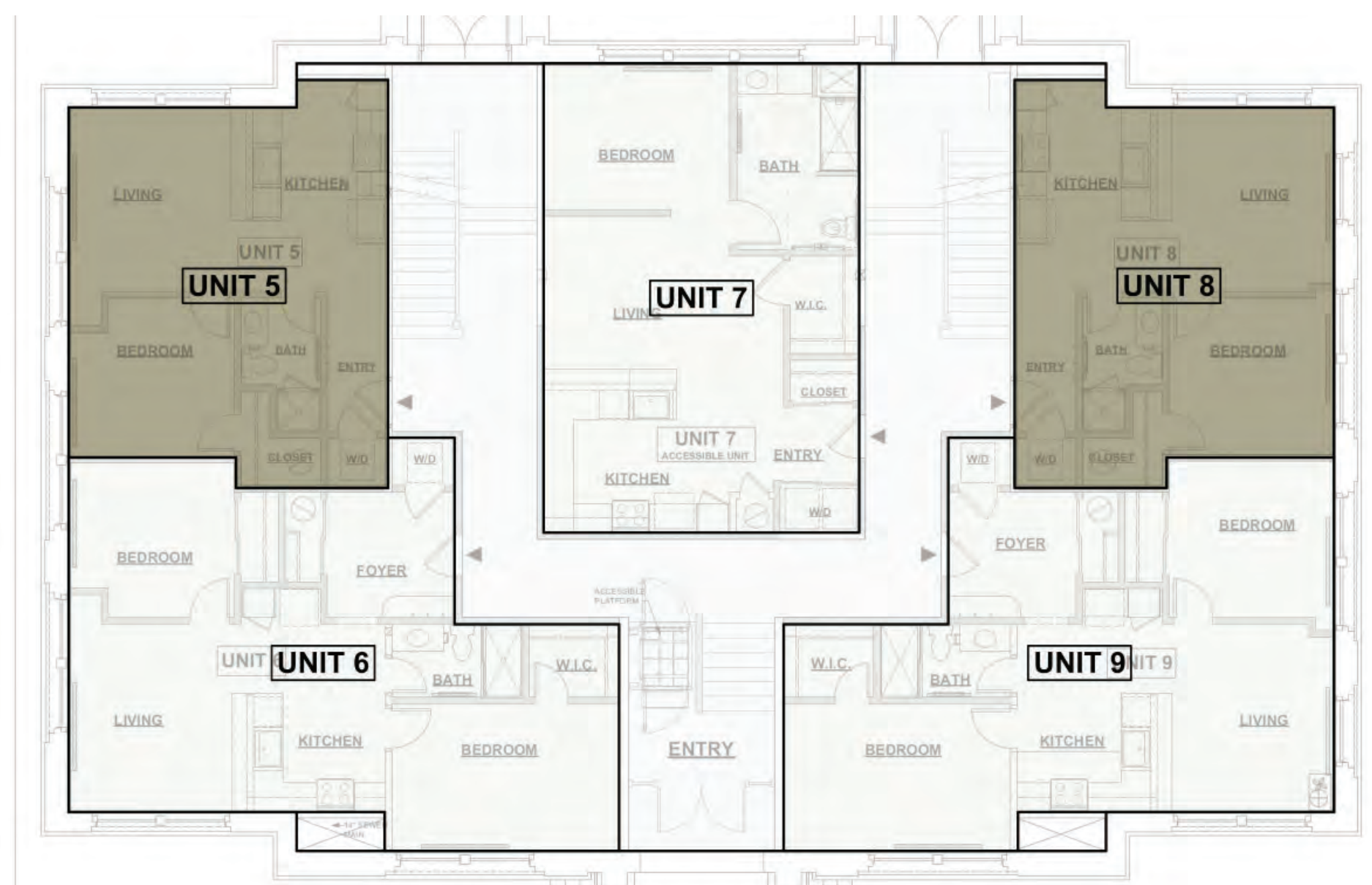
FLATS

718 Pearl Street
Philipsburg, Montana

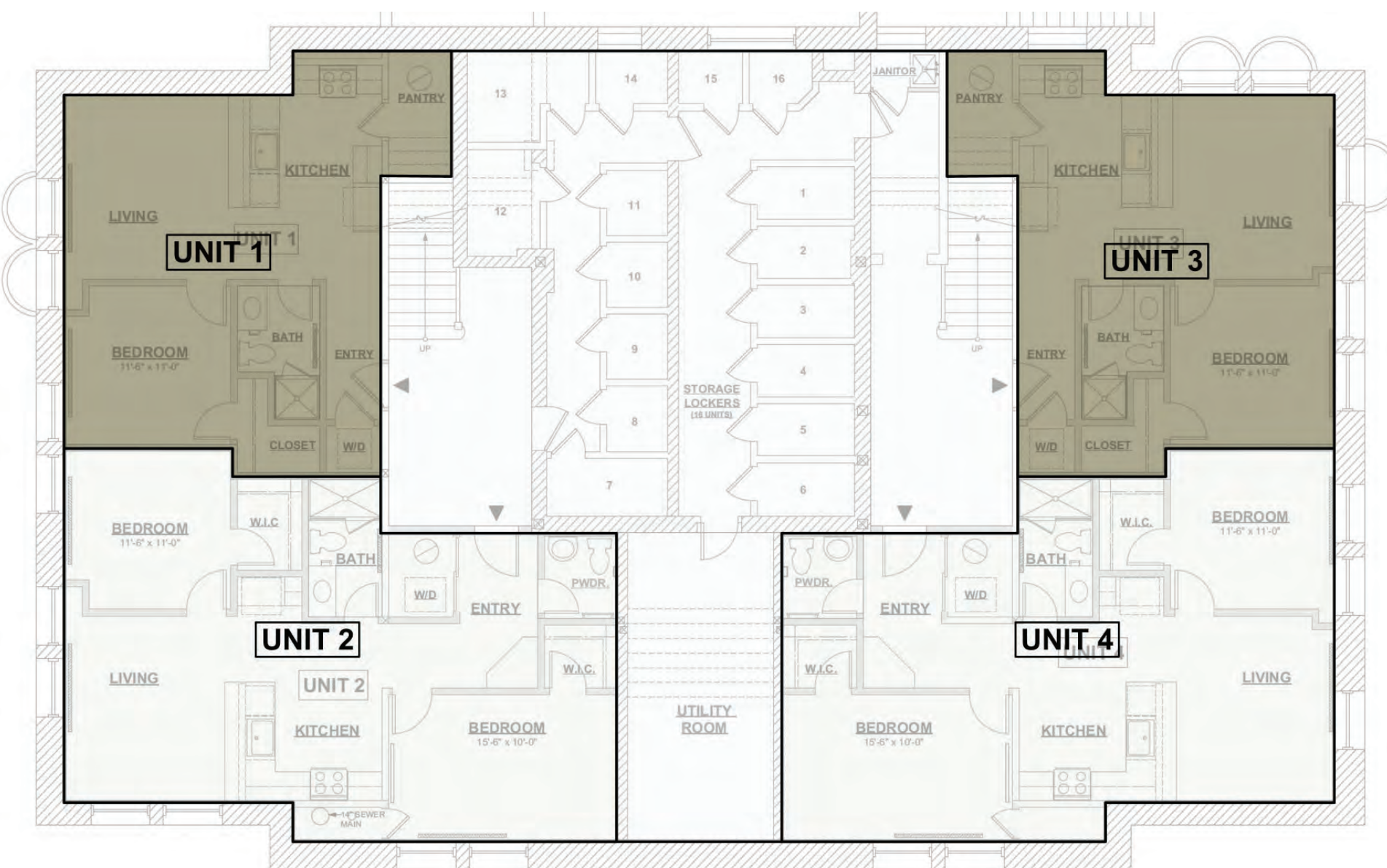


The Granite Units 1 & 3, 5 & 8

*Unit 3 & 8 Mirrored



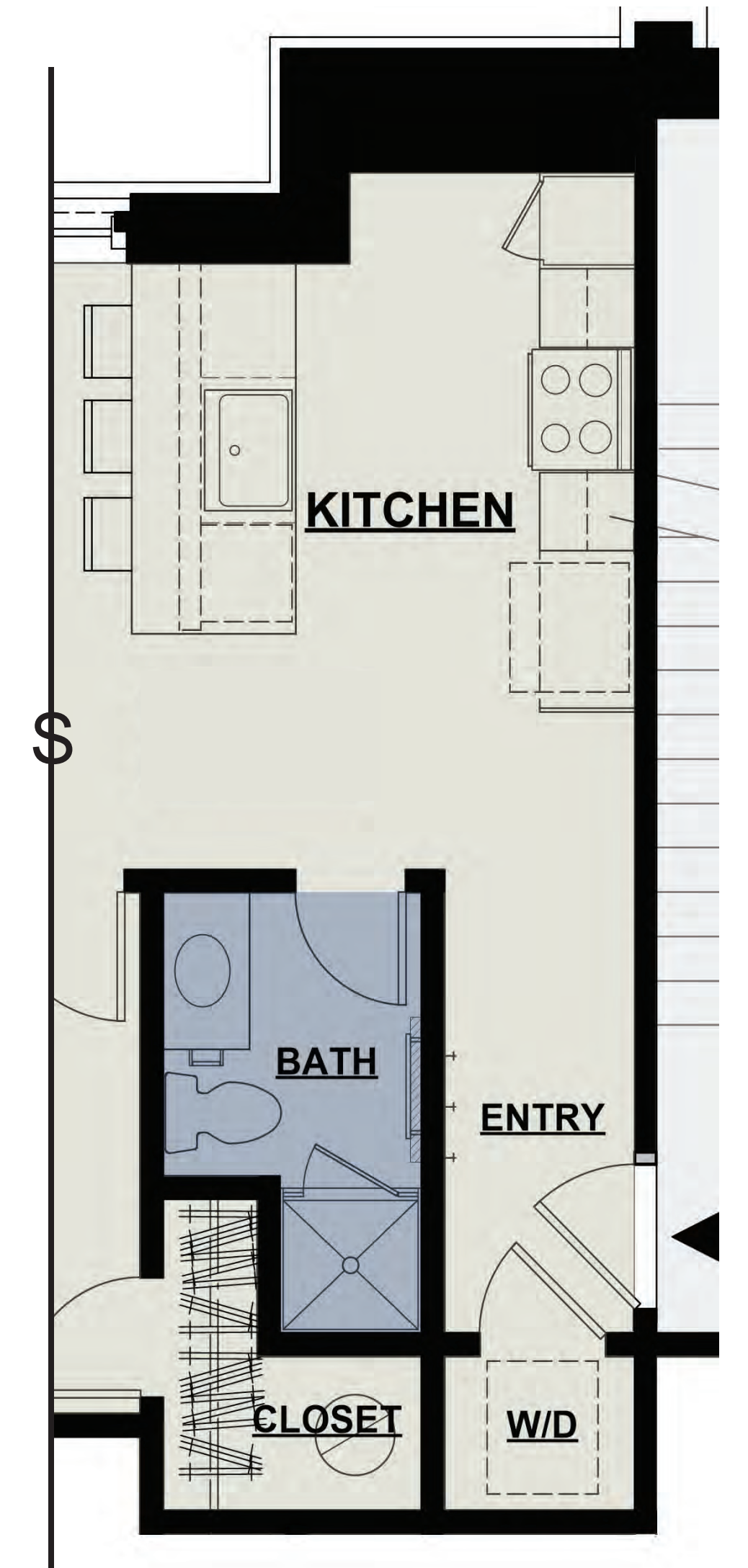
FIRST FLOOR



BASEMENT FLOOR



UNIT 1 & 3



UNIT 5 & 8

1 BEDROOM | 1 BATH

Approx. 565 - 595 SF

- Historic Hardwood Flooring/ and or Luxury Vinyl Plank
- Stylish Cabinetry
- Solid Surface Countertops

- Energy Efficient Stainless Steel Appliances
- In-Unit Washer and Dryer
- Personal Storage Units
- Community Patio Seating, BBQ and Bike Racks

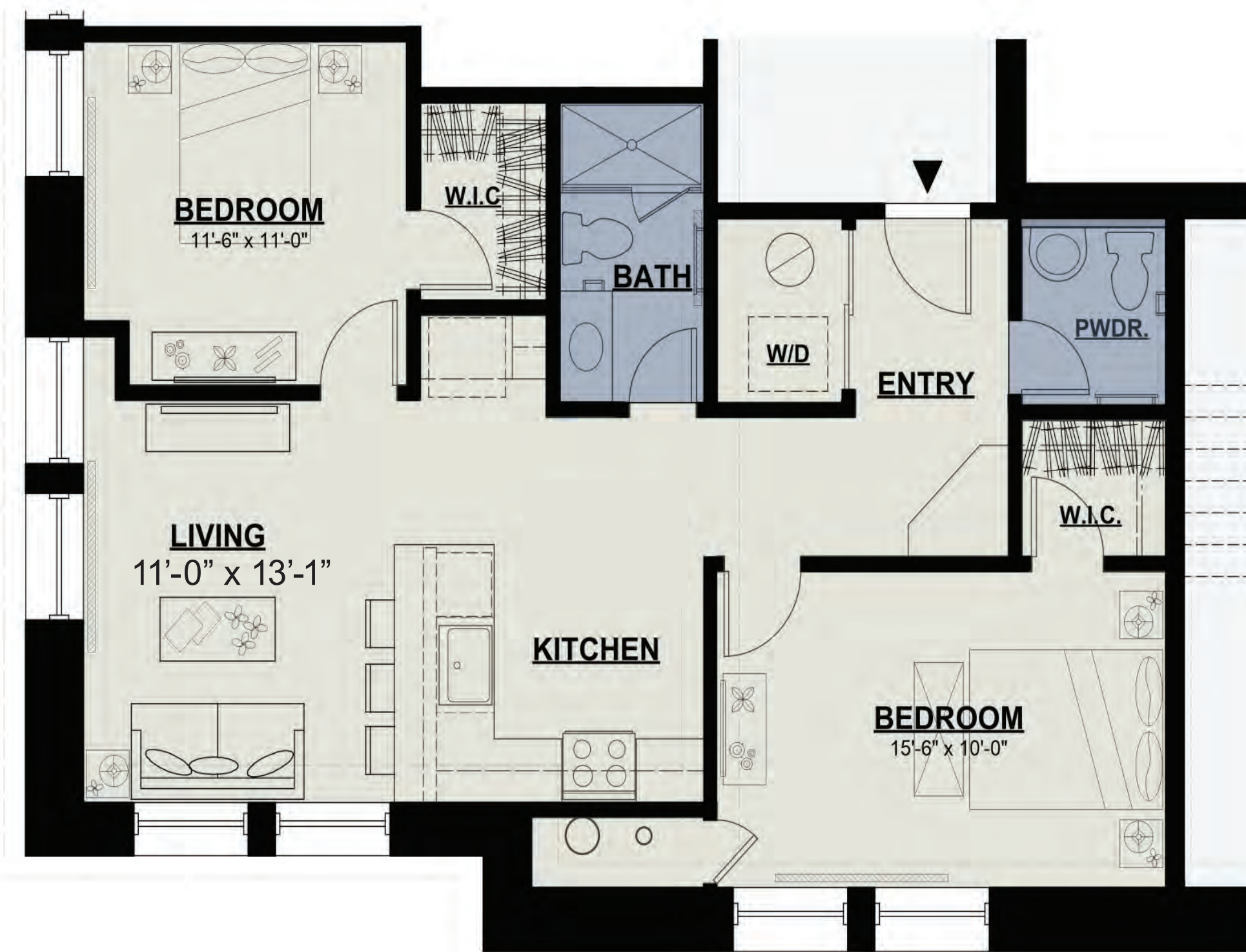
* Room dimensions are approximate. Window sizes and locations vary per unit. Pricing is subject to change.

The Church Hill Units 2 & 4, 6 & 9

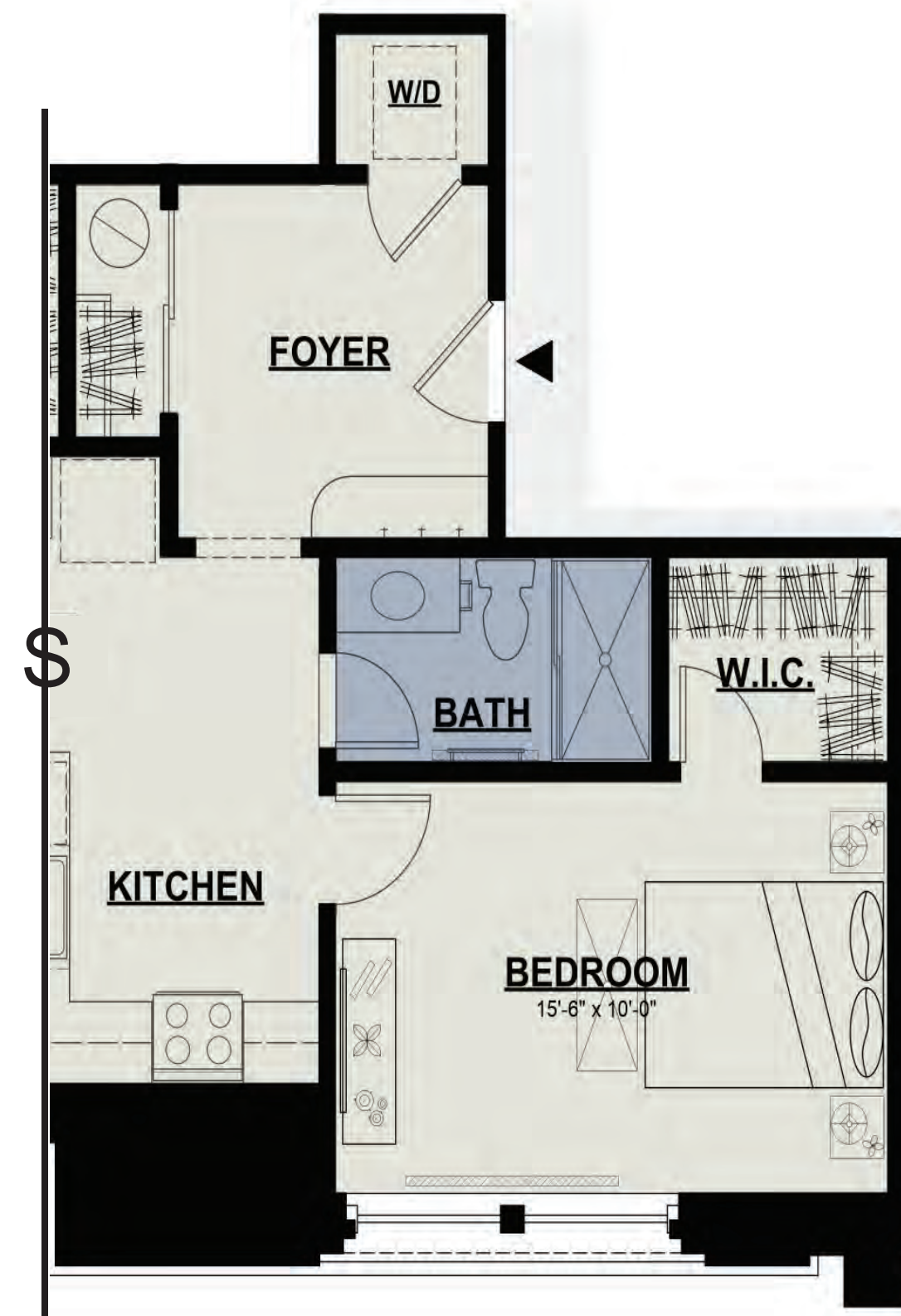
*Unit 4 & 9 Mirrored



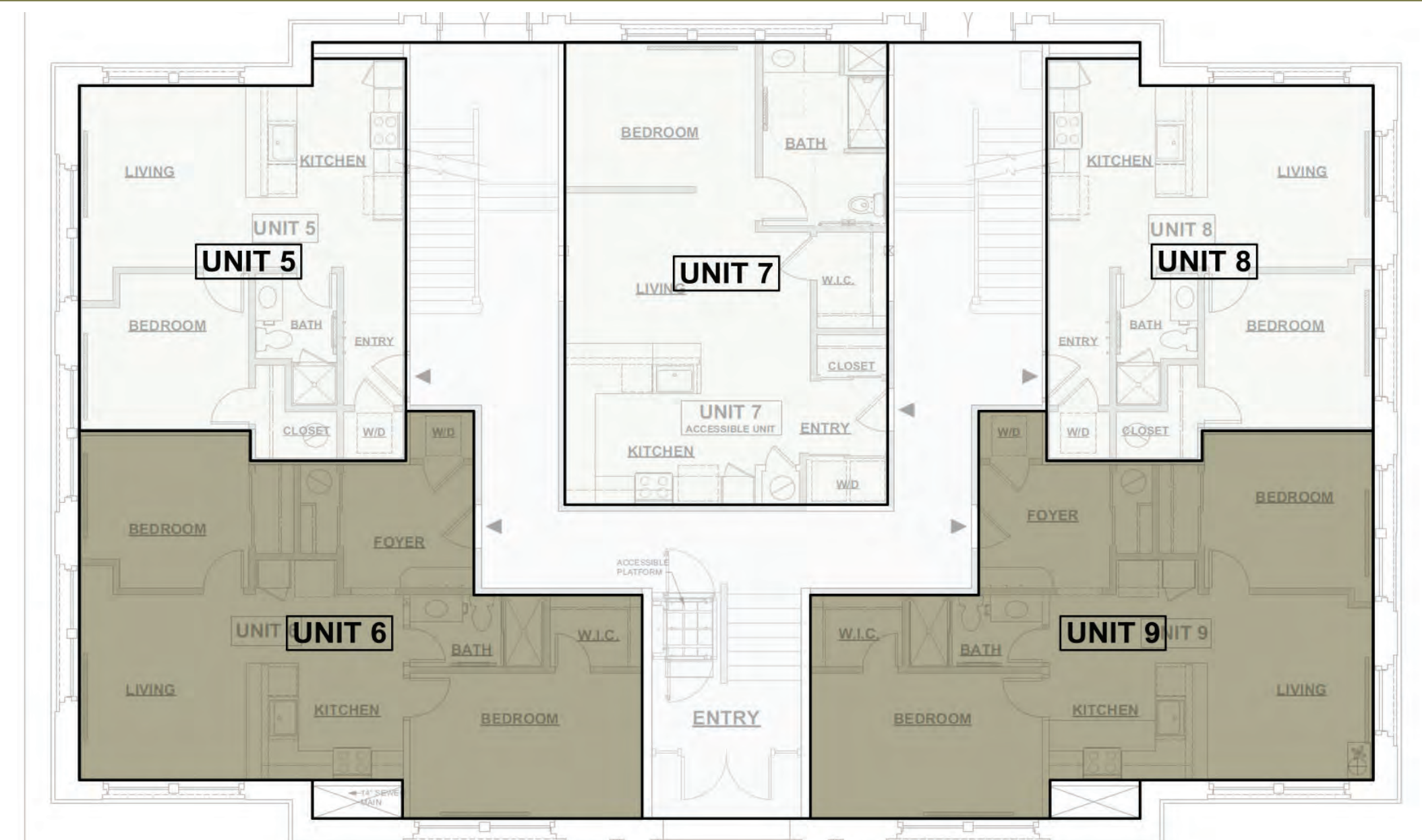
SCHOOLHOUSE
FLATS



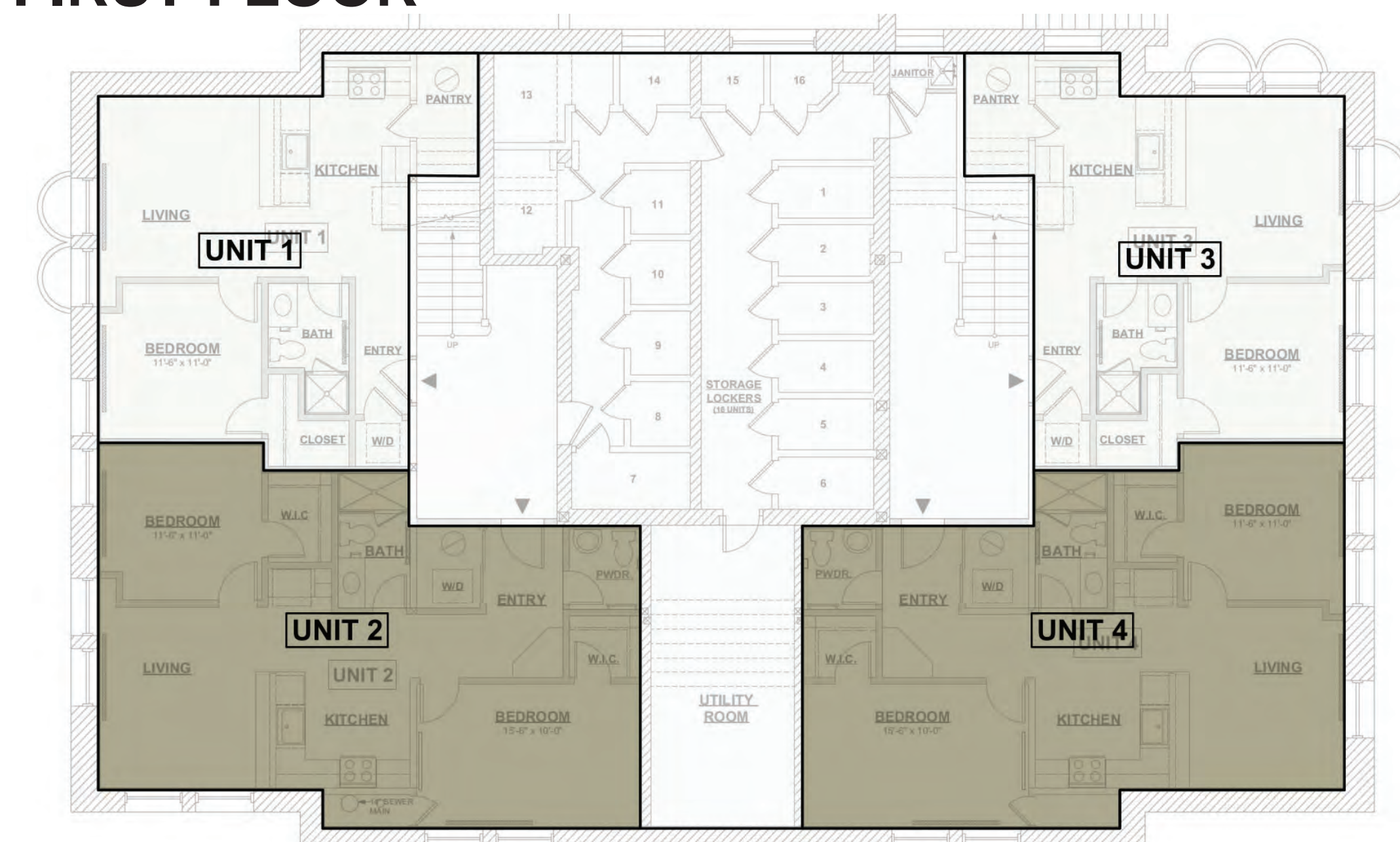
UNIT 2 & 4



UNIT 6 & 9



FIRST FLOOR



BASEMENT FLOOR

\$

2 BEDROOM | 1.5 BATH
Approx. 837 - 865 SF

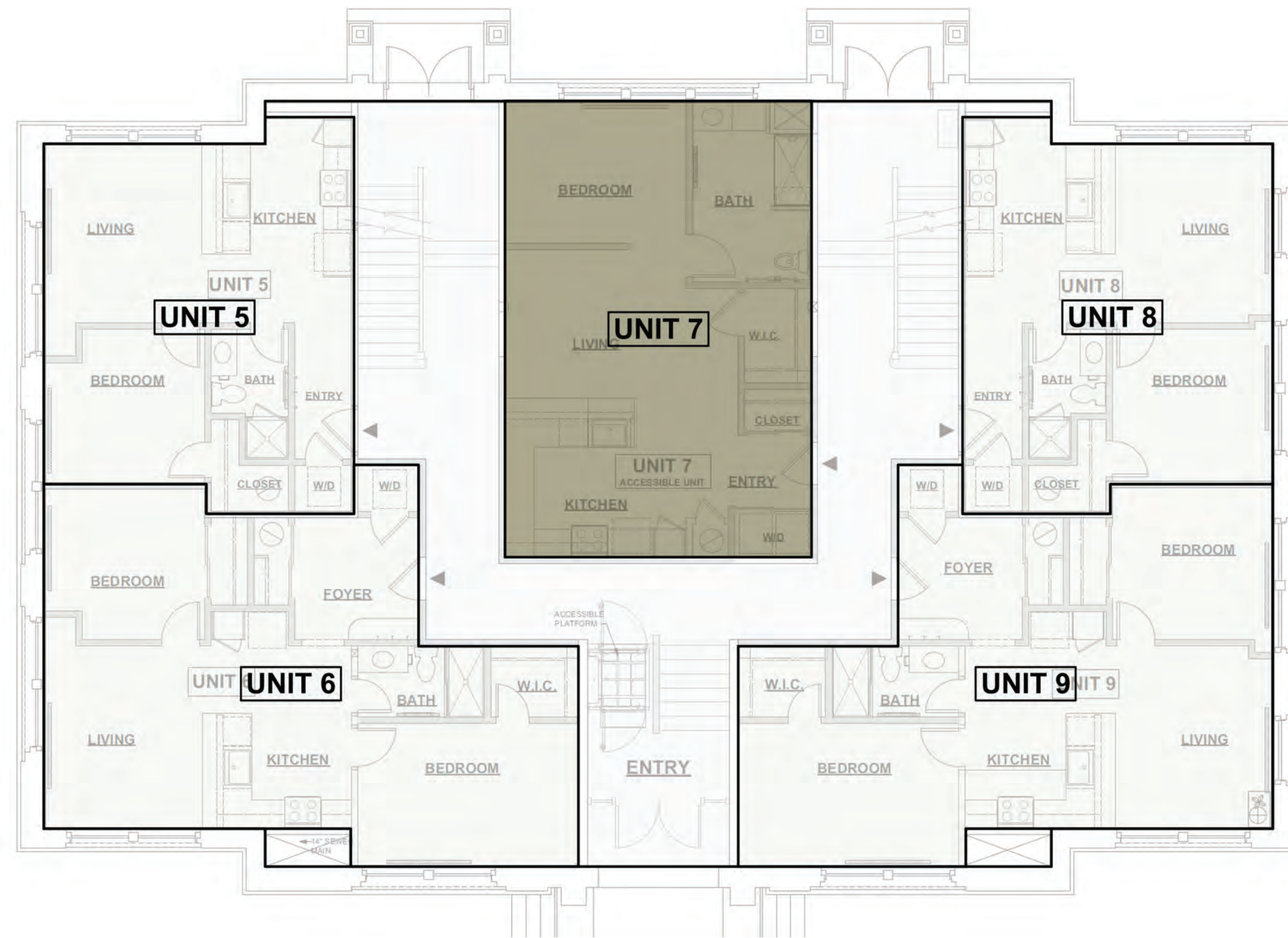
- Energy Efficient Stainless Steel Appliances
- In-Unit Washer and Dryer
- Personal Storage Units
- Community Patio Seating, BBQ and Bike Racks

- Historic Hardwood Flooring/ and or Luxury Vinyl Plank
- Stylish Cabinetry
- Solid Surface Countertops

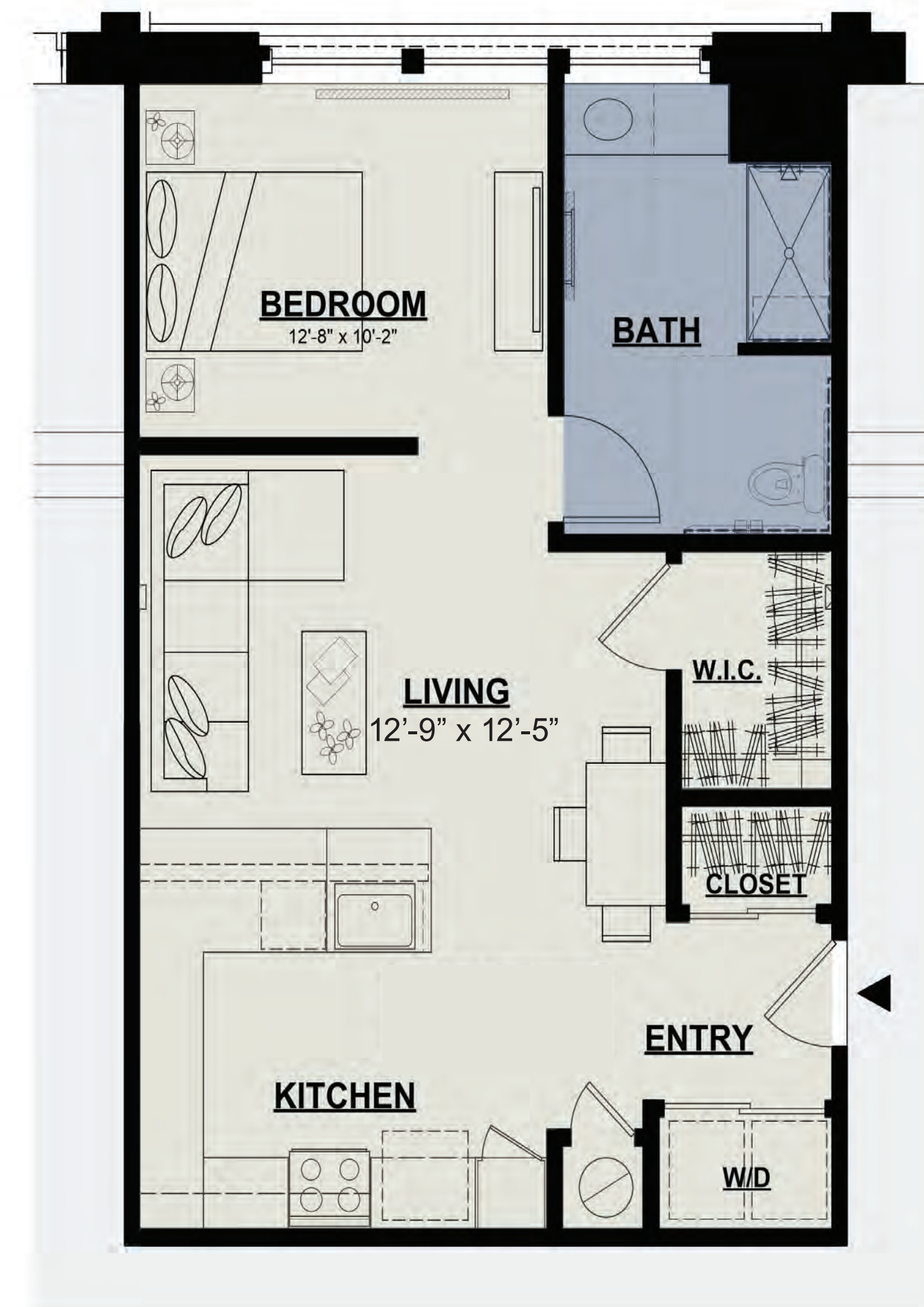
* Room dimensions are approximate. Window sizes and locations vary per unit. Pricing is subject to change

The Greenheck Unit 7

Accessible Unit



FIRST FLOOR



1 BEDROOM | 1 BATH

\$ _____

Approx. 732 SF

- Historic Hardwood Flooring/ and or Luxury Vinyl Plank
- Stylish Cabinetry
- Solid Surface Countertops

- Energy Efficient Stainless Steel Appliances
- In-Unit Washer and Dryer
- Personal Storage Units
- Community Patio Seating, BBQ and Bike Racks

* Room dimensions are approximate. Window sizes and locations vary per unit. Pricing is subject to change.

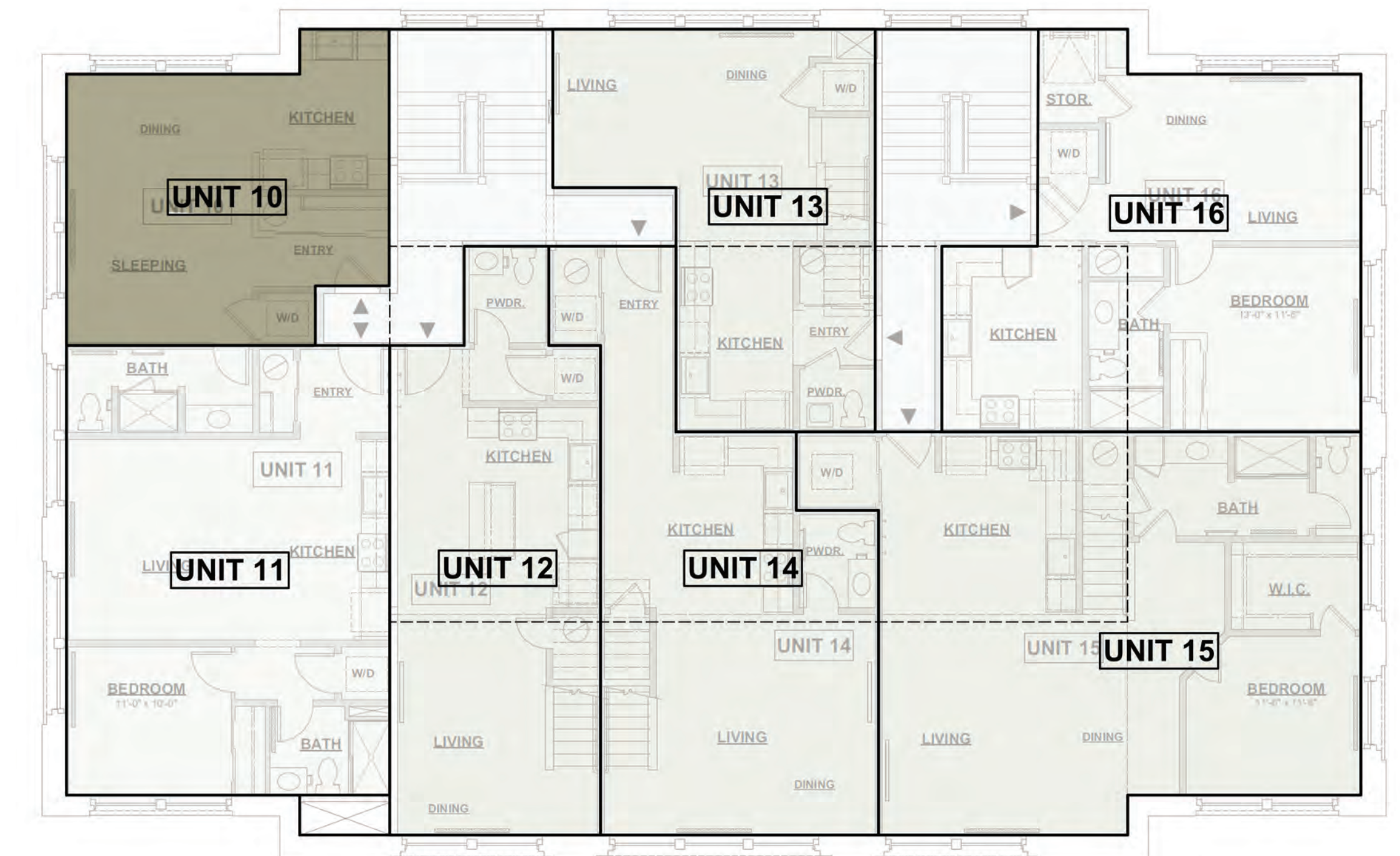
The Redbrick Unit 10



\$

STUDIO | 1 BATH Approx. 472 SF

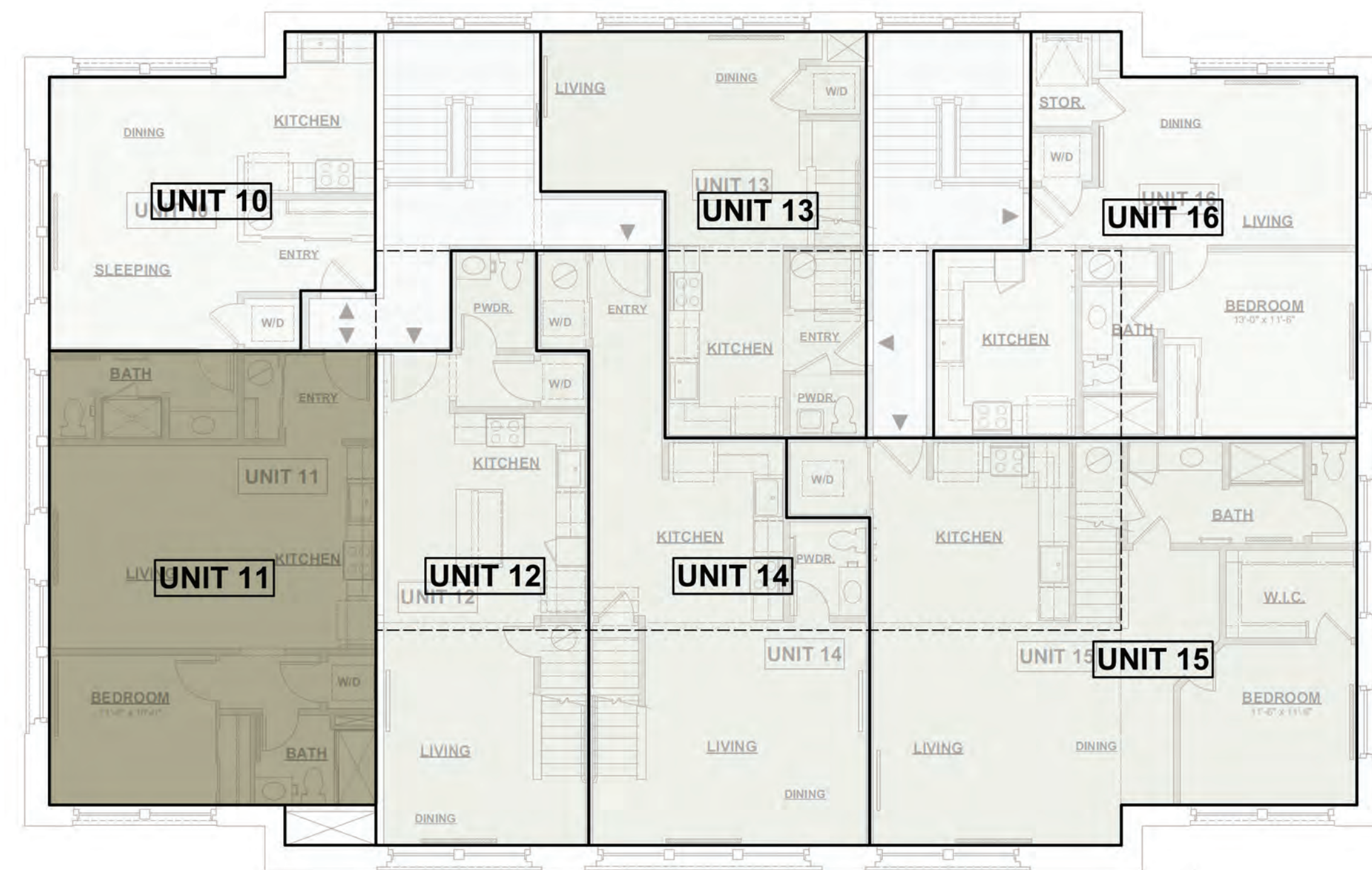
- Energy Efficient Stainless Steel Appliances
- In-Unit Washer and Dryer
- Personal Storage Units
- Community Patio Seating, BBQ and Bike Racks
- Historic Hardwood Flooring/ and or Luxury Vinyl Plank
- Stylish Cabinetry
- Solid Surface Countertops



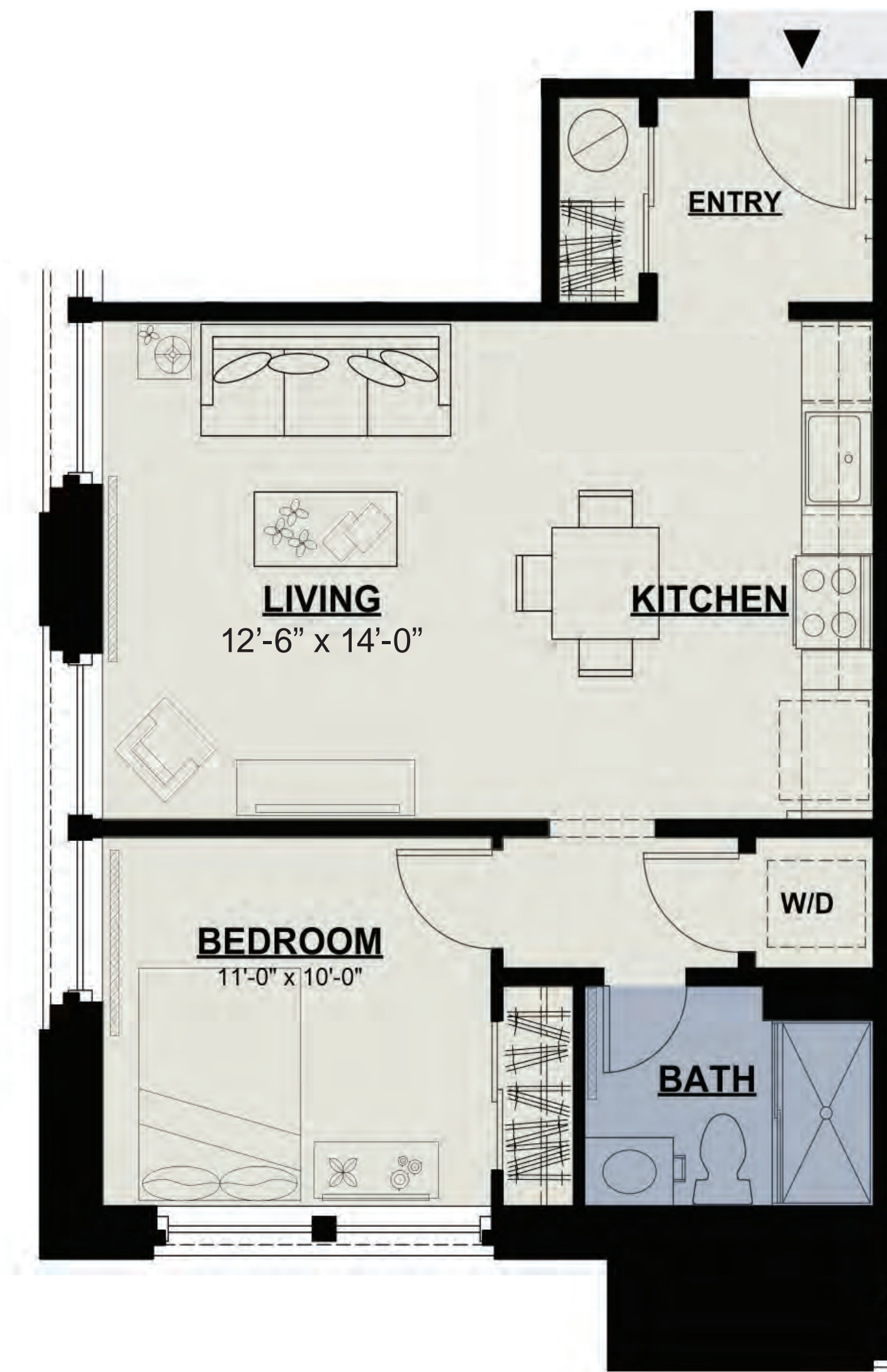
SECOND FLOOR

* Room dimensions are approximate. Window sizes and locations vary per unit. Pricing is subject to change

The Pintler Unit 11



SECOND FLOOR



1 BEDROOM | 1 BATH

\$ _____

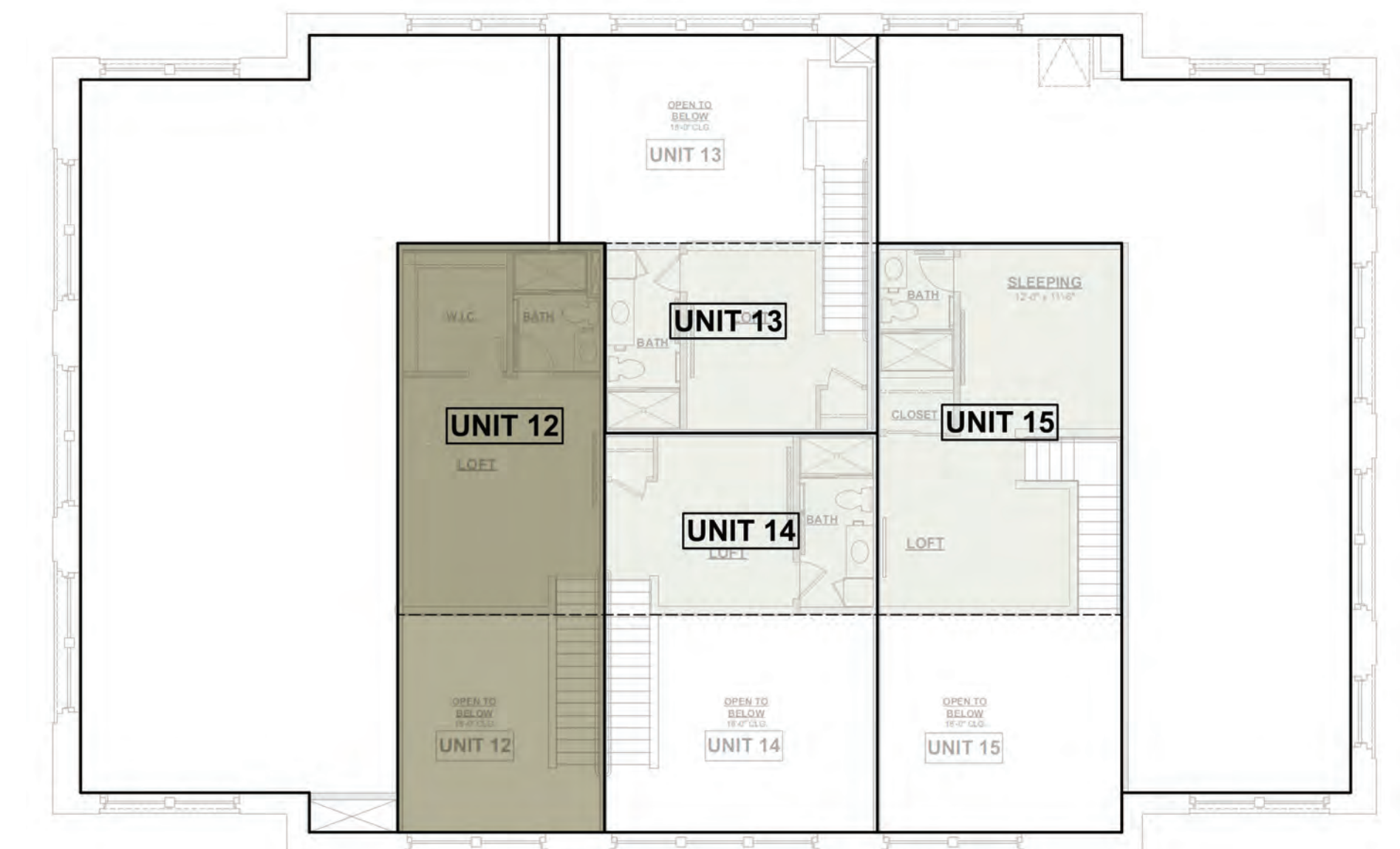
Approx. 580 SF

- Historic Hardwood Flooring/ and or Luxury Vinyl Plank
- Stylish Cabinetry
- Solid Surface Countertops

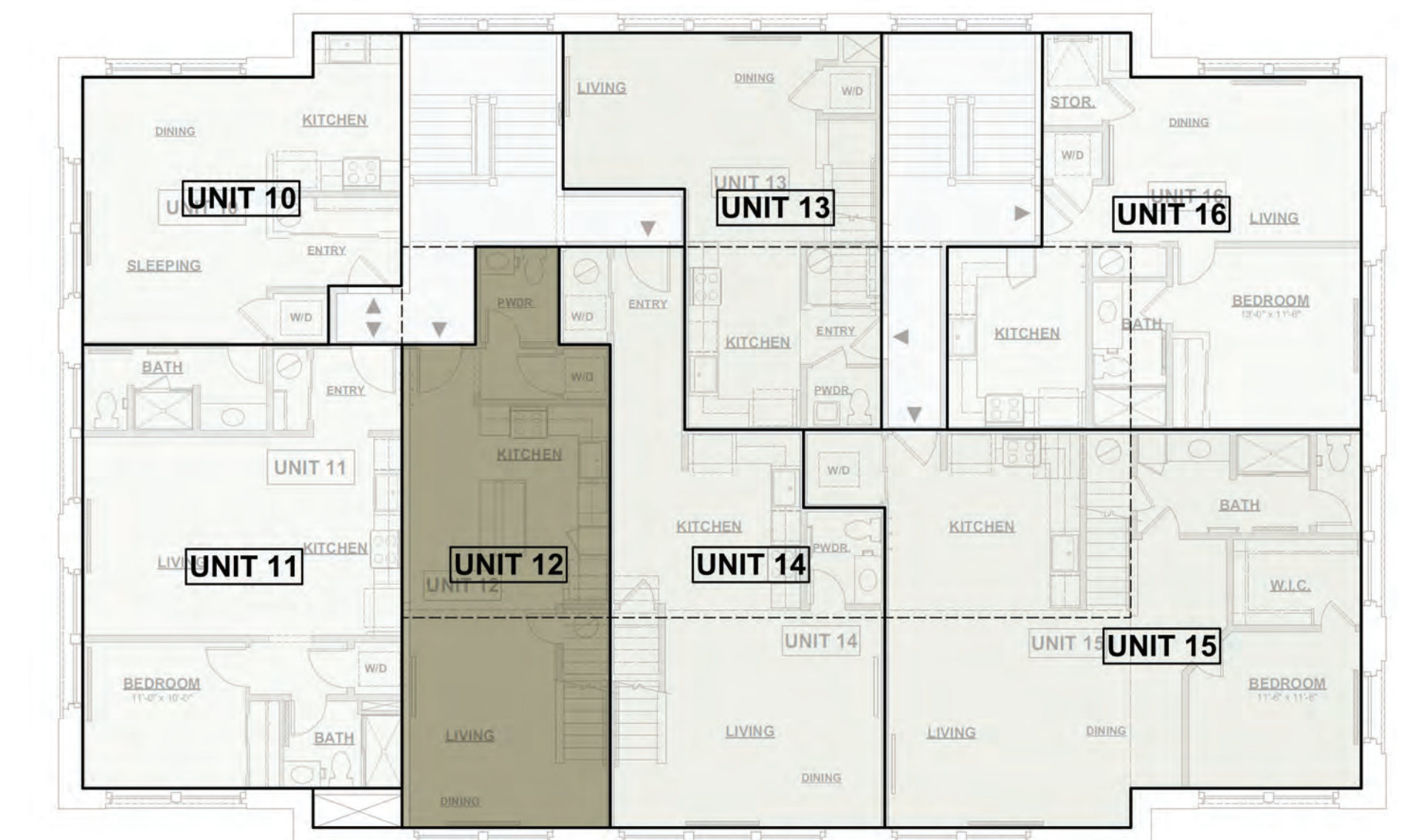
- Energy Efficient Stainless Steel Appliances
- In-Unit Washer and Dryer
- Personal Storage Units
- Community Patio Seating, BBQ and Bike Racks

* Room dimensions are approximate. Window sizes and locations vary per unit. Pricing is subject to change.

The Reidesheimer Unit 12



THIRD FLOOR



SECOND FLOOR

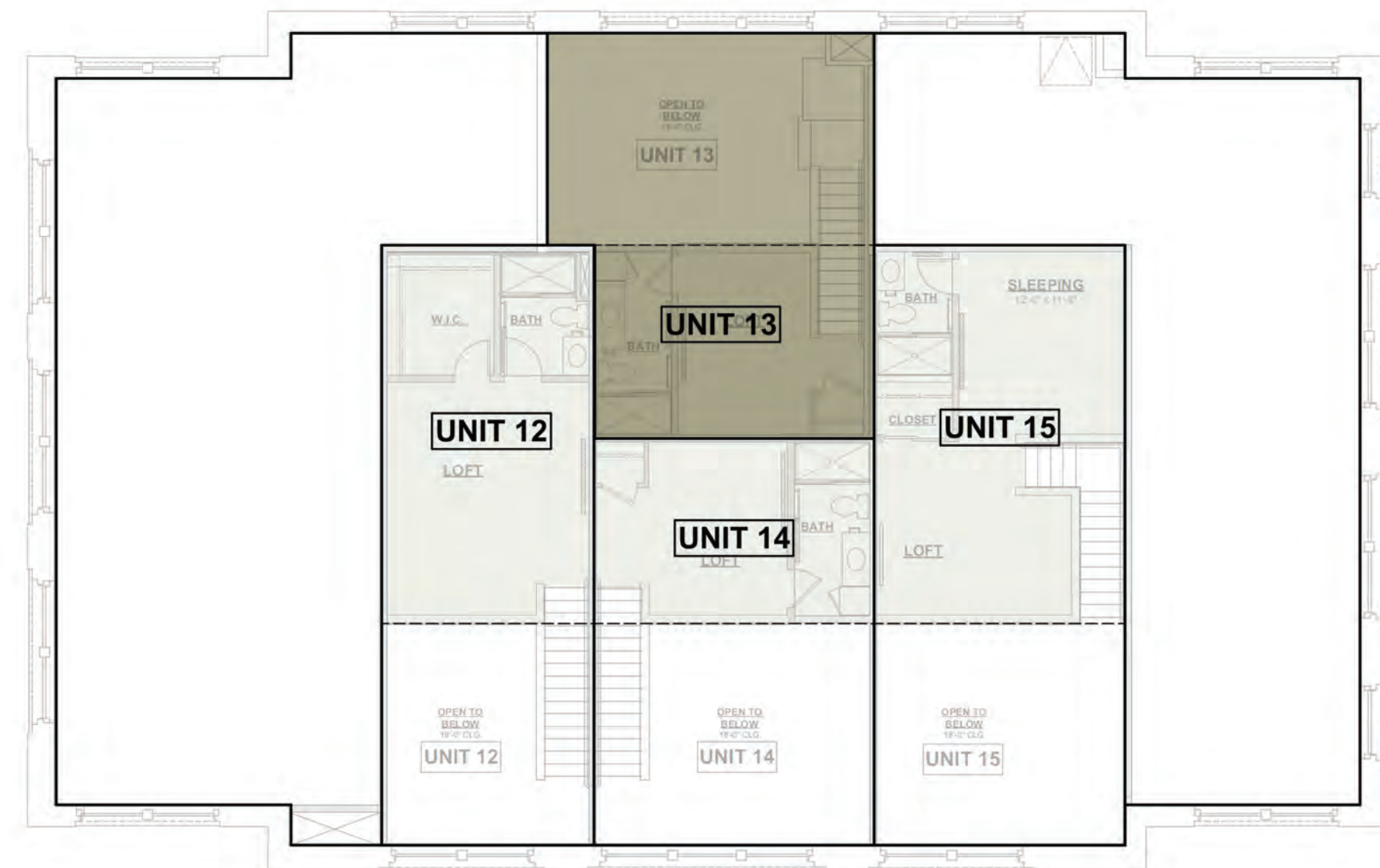
\$

1 BEDROOM | 1.5 BATH
Approx. 838 SF

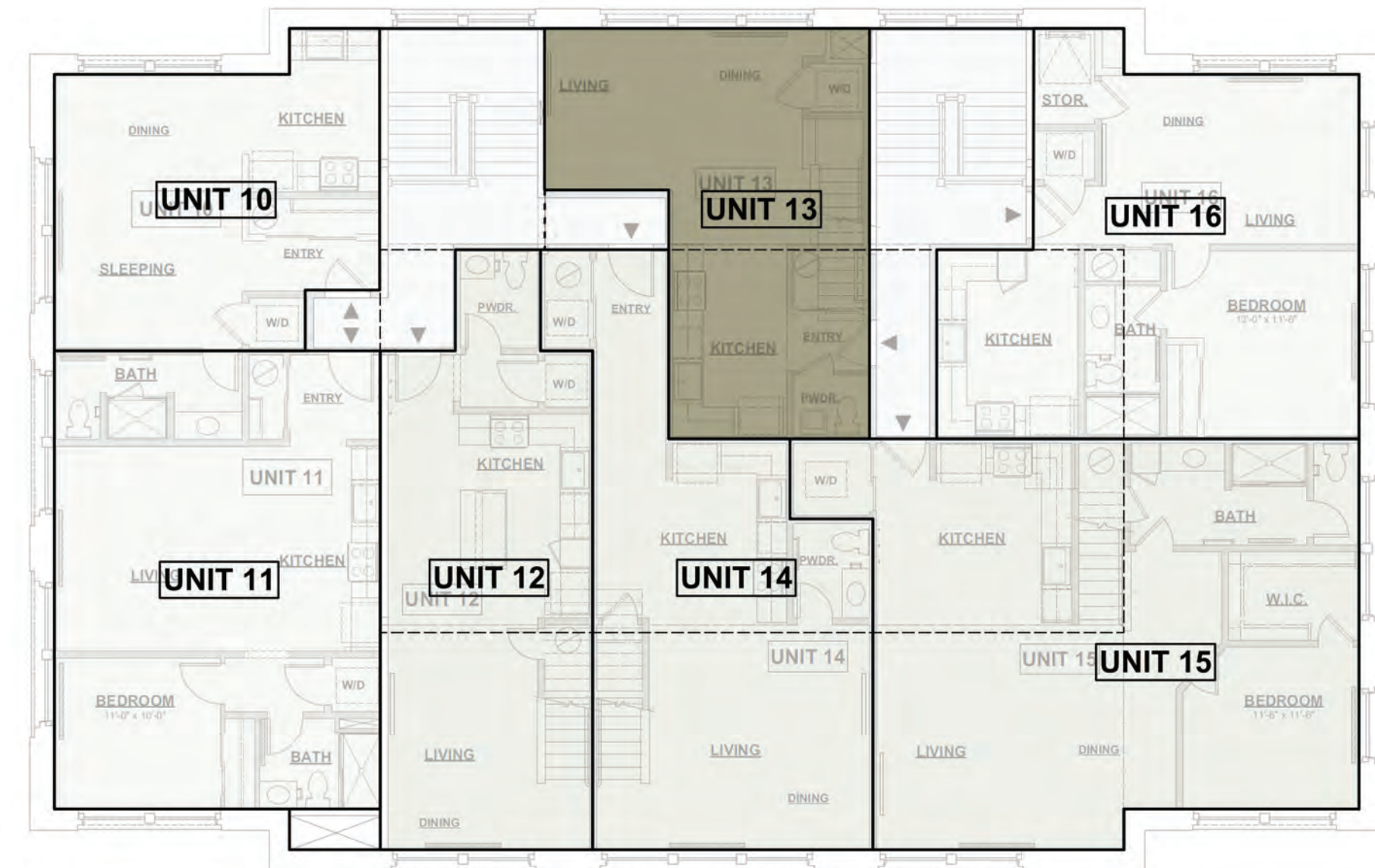
- Energy Efficient Stainless Steel Appliances
- In-Unit Washer and Dryer
- Personal Storage Units
- Community Patio Seating, BBQ and Bike Racks
- Historic Hardwood Flooring/ and or Luxury Vinyl Plank
- Stylish Cabinetry
- Solid Surface Countertops

* Room dimensions are approximate. Window sizes and locations vary per unit. Pricing is subject to change

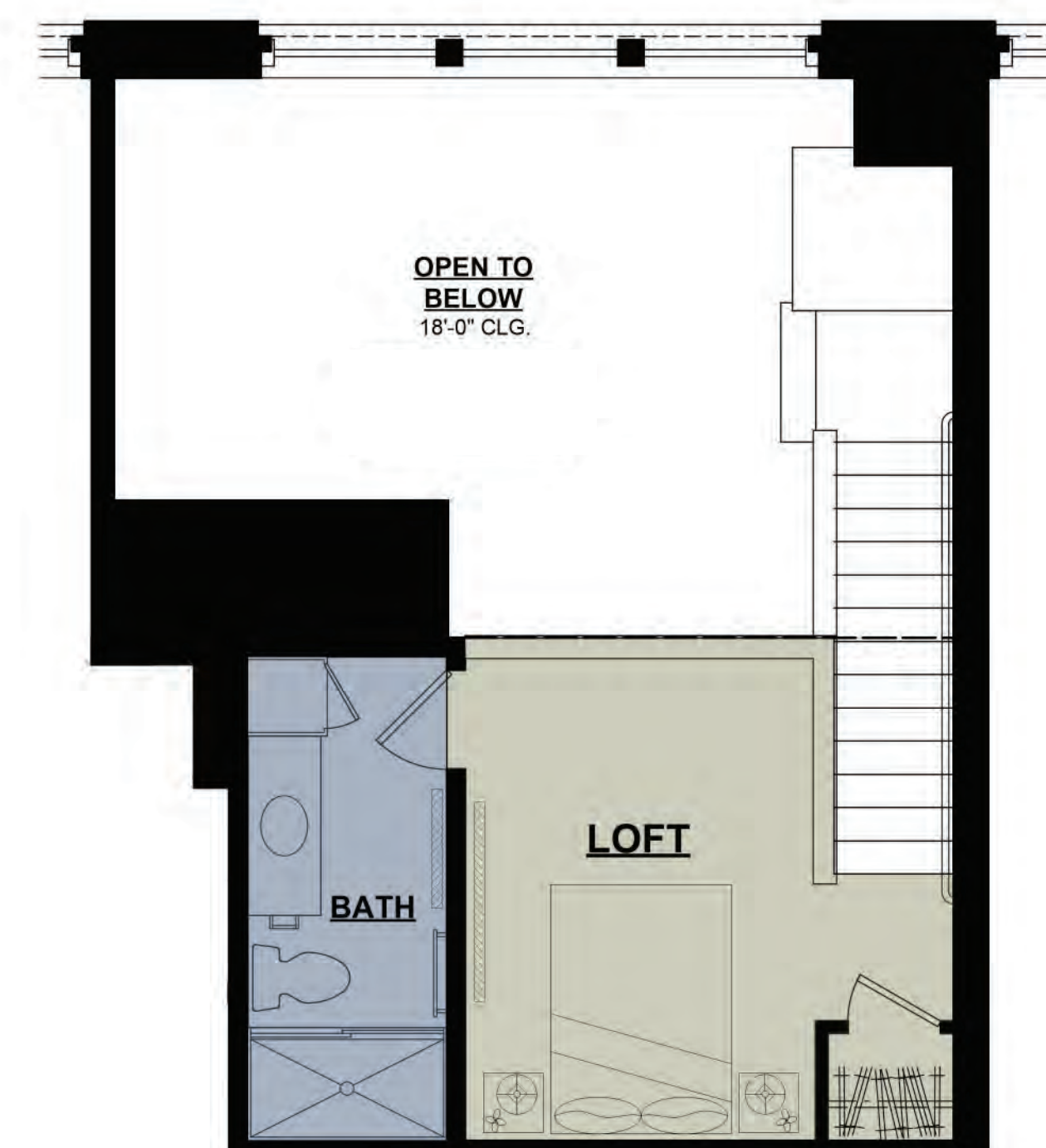
The Hope Mill Unit 13



THIRD FLOOR



SECOND FLOOR



1 BEDROOM | 1.5 BATH

Approx. 674 SF

\$ _____

- Historic Hardwood Flooring/ and or Luxury Vinyl Plank
- Stylish Cabinetry
- Solid Surface Countertops

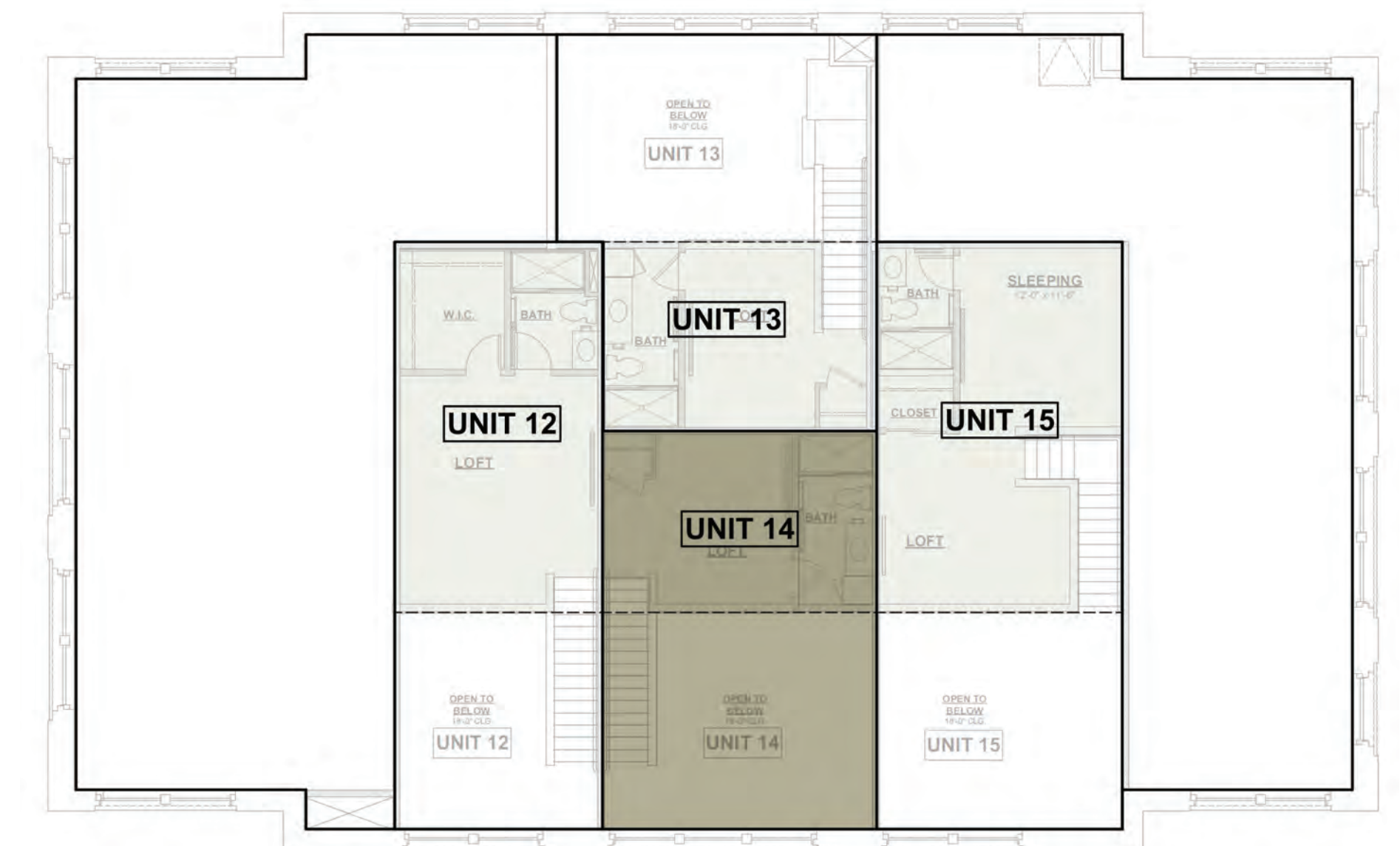
- Energy Efficient Stainless Steel Appliances
- In-Unit Washer and Dryer
- Personal Storage Units
- Community Patio Seating, BBQ and Bike Racks

* Room dimensions are approximate. Window sizes and locations vary per unit. Pricing is subject to change.

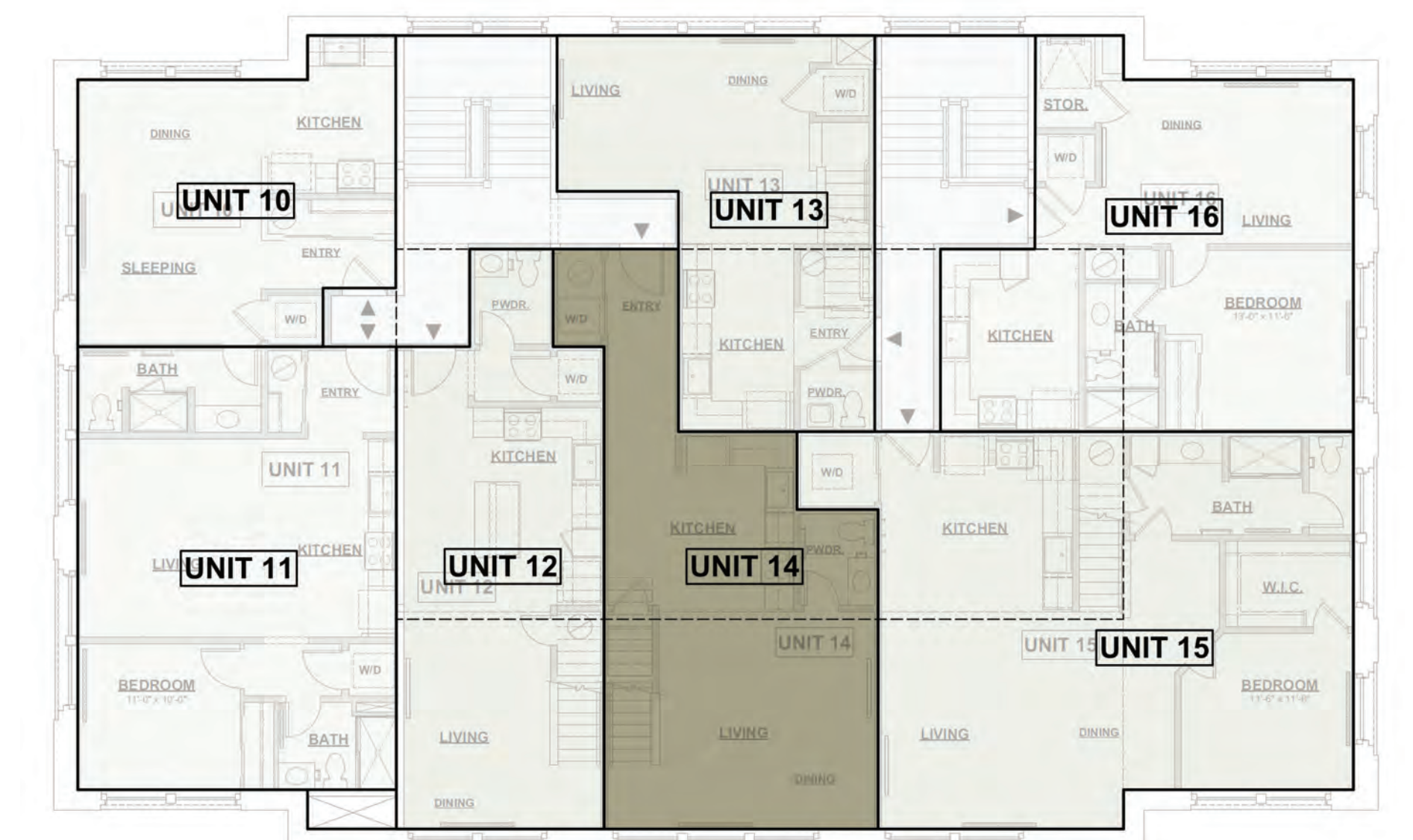
The Silver Unit 14



SCHOOLHOUSE
FLATS



THIRD FLOOR



SECOND FLOOR

\$

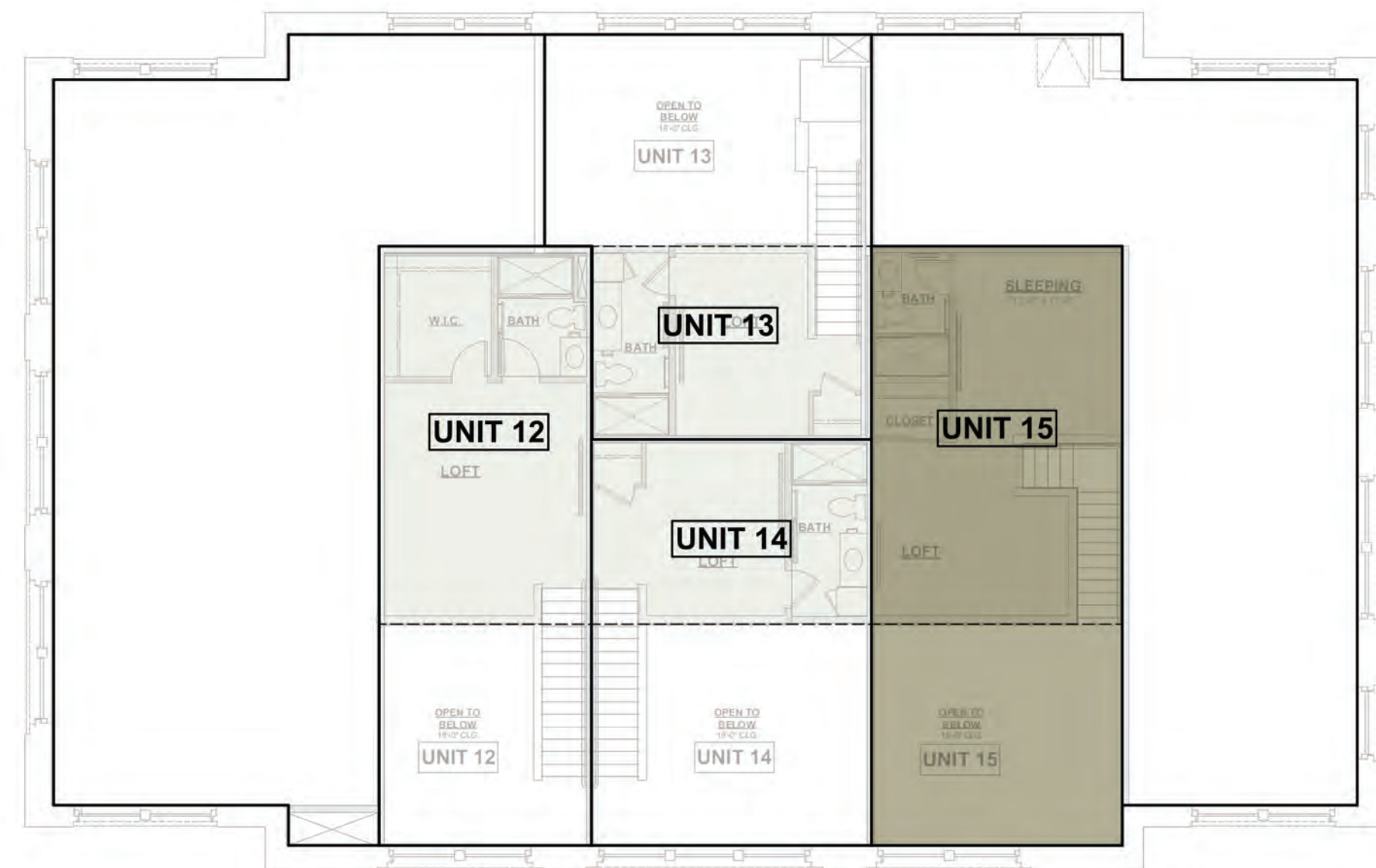
1 BEDROOM | 1.5 BATH Approx. 780 SF

- Energy Efficient Stainless Steel Appliances
- In-Unit Washer and Dryer
- Personal Storage Units
- Community Patio Seating, BBQ and Bike Racks

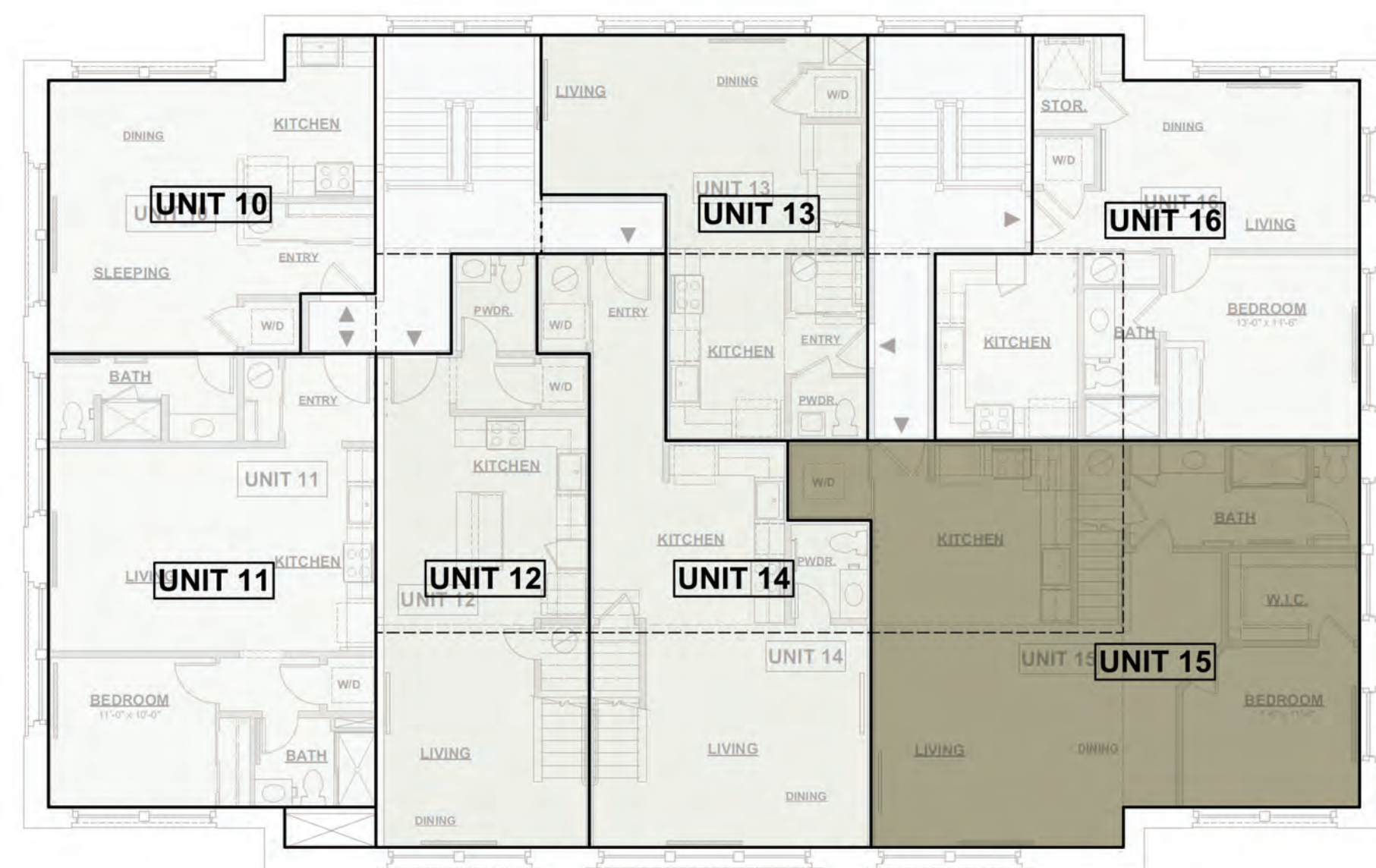
- Historic Hardwood Flooring/ and or Luxury Vinyl Plank
- Stylish Cabinetry
- Solid Surface Countertops

* Room dimensions are approximate. Window sizes and locations vary per unit. Pricing is subject to change

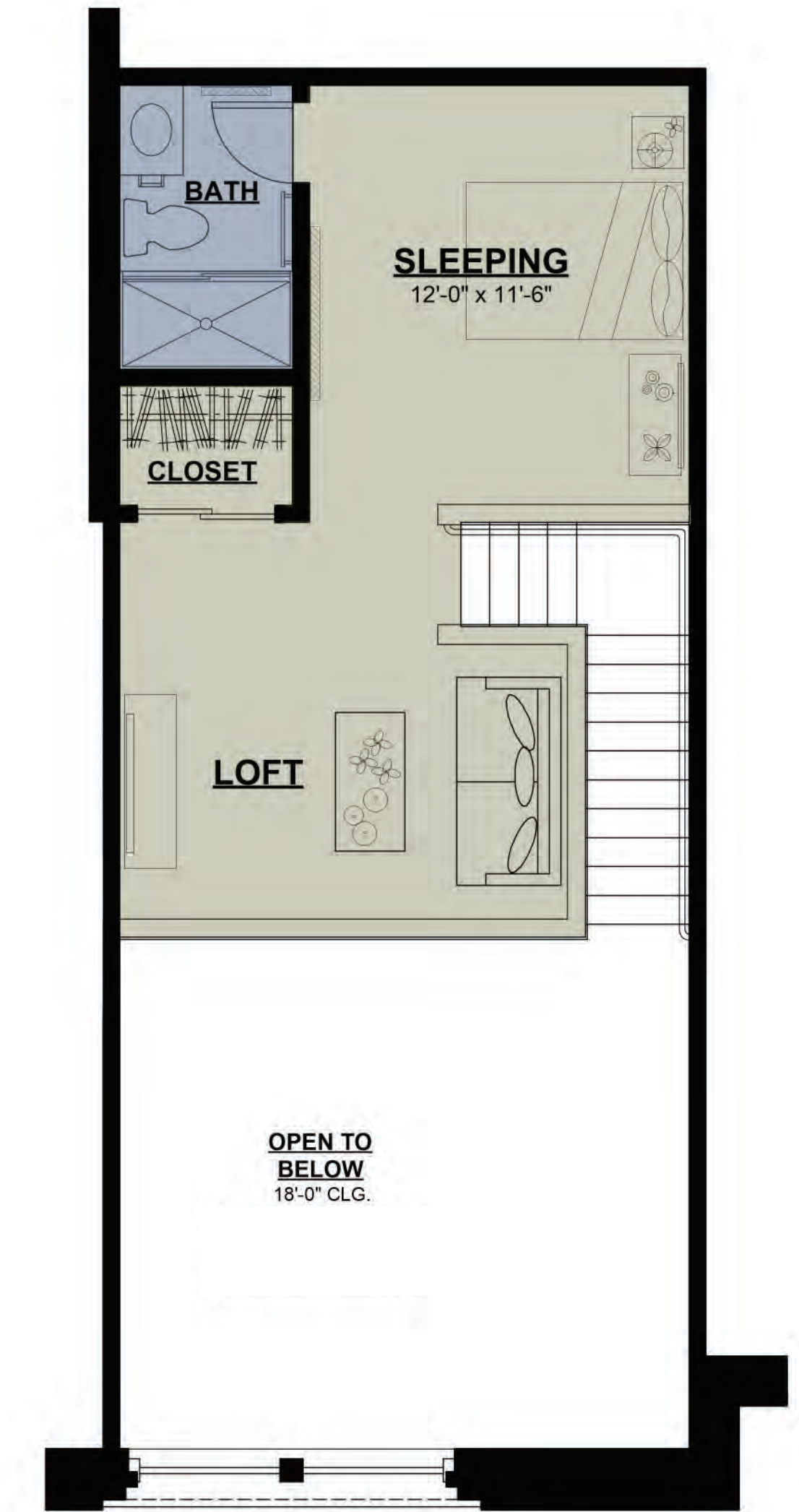
The Sapphire Unit 15



THIRD FLOOR



SECOND FLOOR



2 BEDROOM | 2 BATH | LOFT

\$

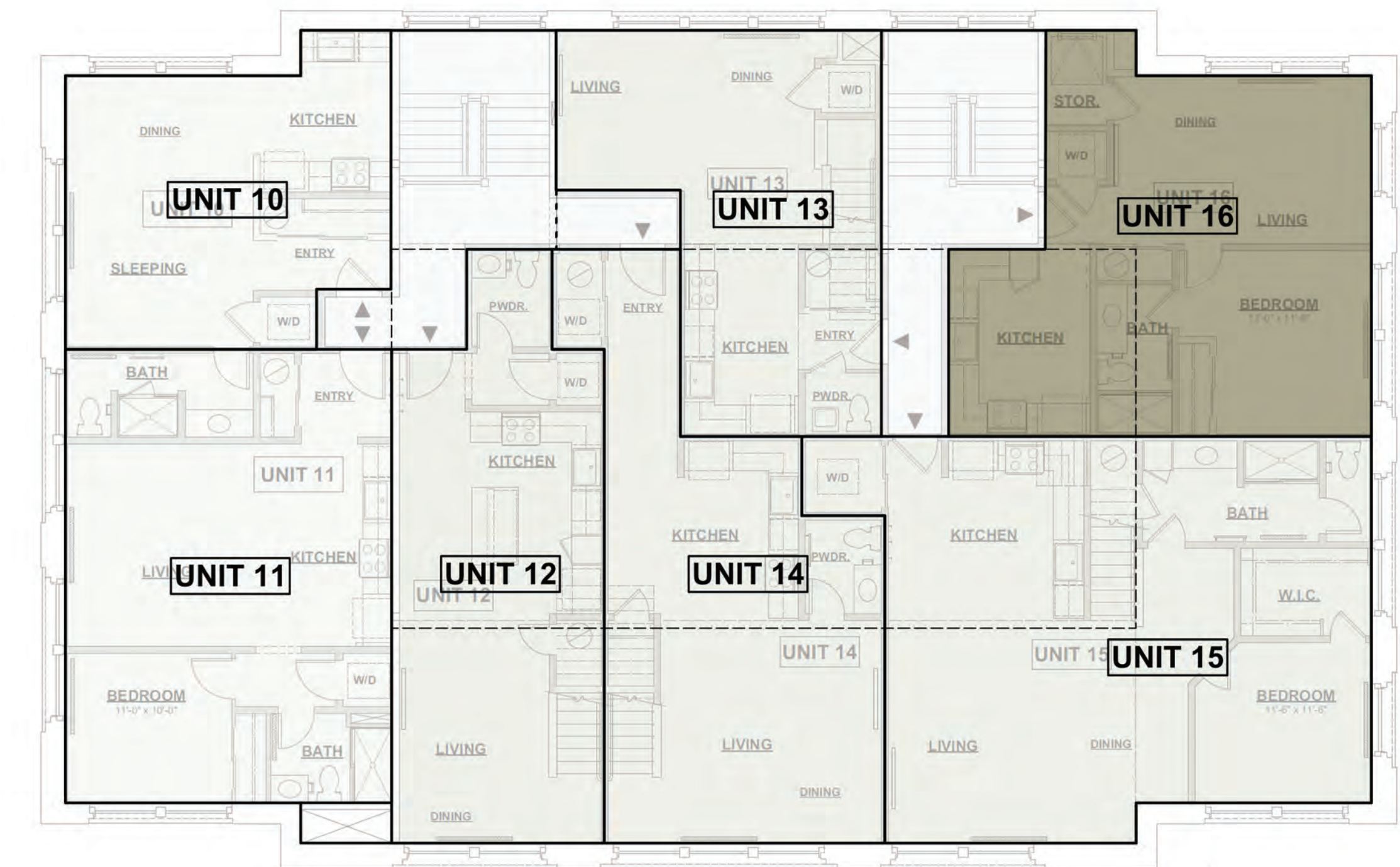
Approx. 1254 SF

- Historic Hardwood Flooring/ and or Luxury Vinyl Plank
- Stylish Cabinetry
- Solid Surface Countertops

- Energy Efficient Stainless Steel Appliances
- In-Unit Washer and Dryer
- Personal Storage Units
- Community Patio Seating, BBQ and Bike Racks

* Room dimensions are approximate. Window sizes and locations vary per unit. Pricing is subject to change.

The Discovery Unit 16



\$

1 BEDROOM | 1 BATH Approx. 622 SF

- Energy Efficient Stainless Steel Appliances
- In-Unit Washer and Dryer
- Personal Storage Units
- Community Patio Seating, BBQ and Bike Racks
- Historic Hardwood Flooring/ and or Luxury Vinyl Plank
- Stylish Cabinetry
- Solid Surface Countertops

SECOND FLOOR

* Room dimensions are approximate. Window sizes and locations vary per unit. Pricing is subject to change



SCHOOLHOUSE
FLATS

www.schoolhouseflatspburg.com

Call: (888) 850-6981

Text: (925) 639-6648

718 Pearl Street, Philipsburg, Montana